



# Rowan County Thoroughfares

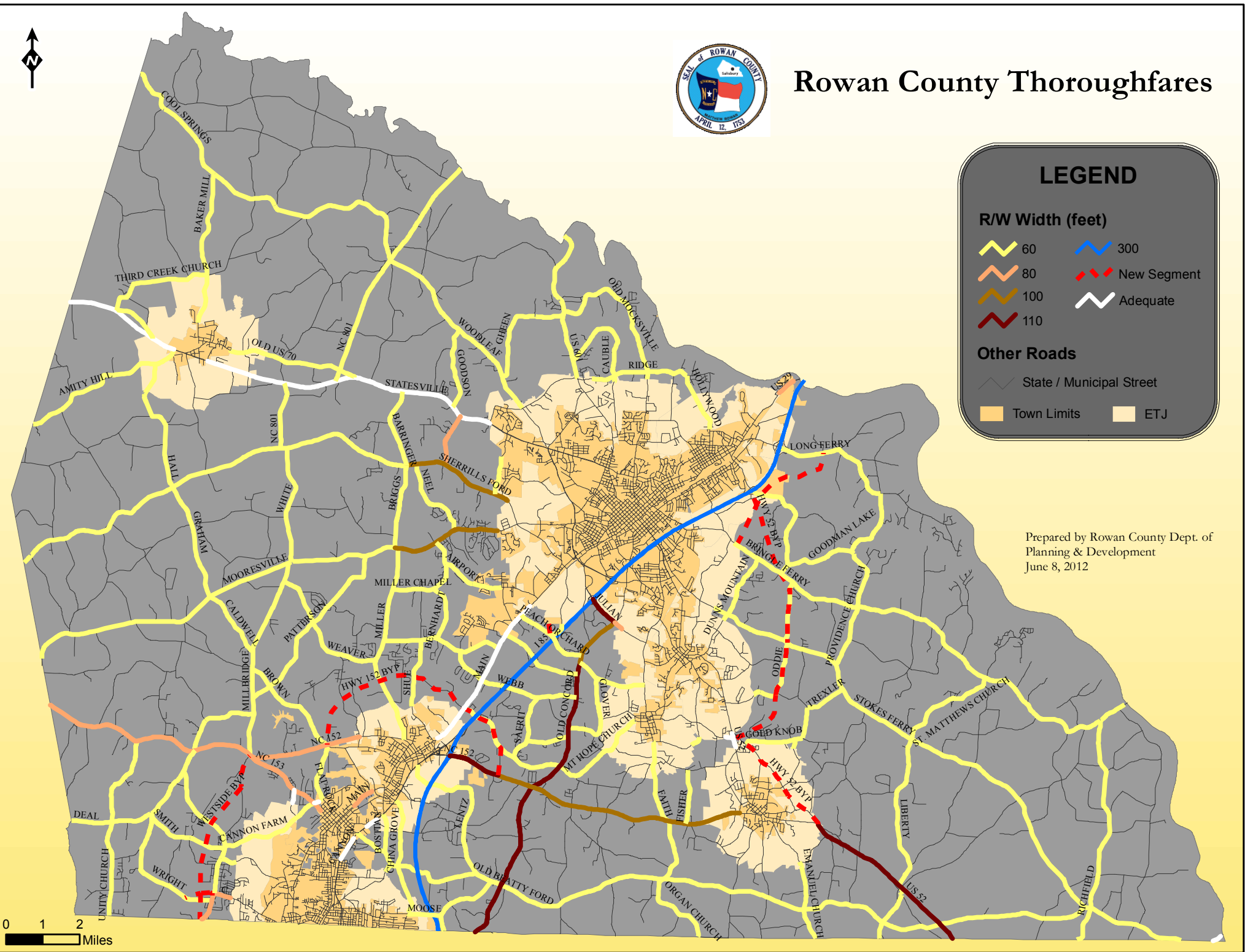
**LEGEND**

**R/W Width (feet)**

- 60
- 80
- 100
- 110
- 300
- New Segment
- Adequate

**Other Roads**

- State / Municipal Street
- Town Limits
- ETJ



Prepared by Rowan County Dept. of Planning & Development  
June 8, 2012