

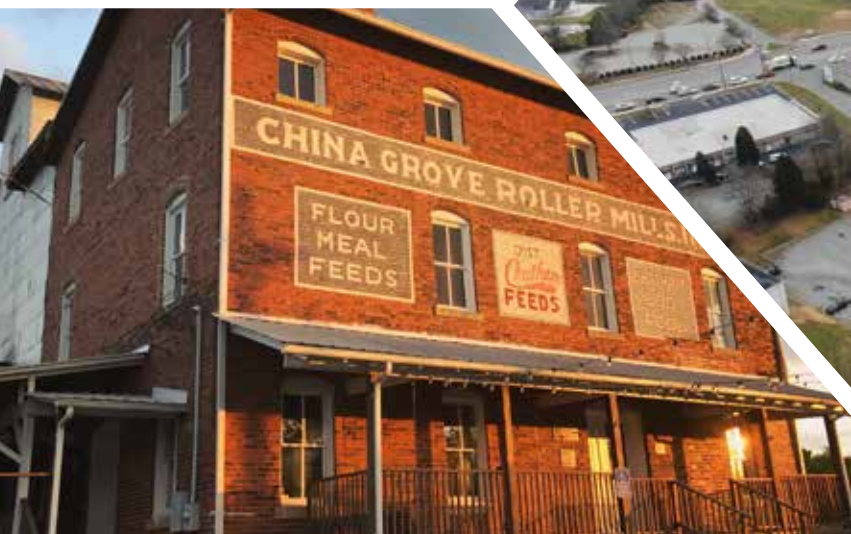


ROWAN COUNTY

NORTH CAROLINA

Be an original.®

ANNUAL 2021 REPORT



Annual Report 2021

Through the many challenges presented by the onset of the COVID-19 pandemic Rowan County continued its mission to “be an original.” The County exhibited its resilience and determination to persevere. Residents of Rowan County continuously demonstrate a “can do” attitude, desire to thrive, and take advantage of all the possibilities Rowan County has to offer.

Expansions to key entrepreneurial firms such as Integro Technologies, Continental Structural Plastics and Eastern Fence will create hundreds of new employment opportunities for our community. The I-85 corridor expansion keeps drawing investment interest to Rowan County thus creating economic and residential growth. Long standing companies, such as Food Lion, Cheerwine, and Daimler Truck North America continue to call Rowan County home.

In 2020 Rowan County community partners focused on fulfilling the needs and providing resources to the community. A special interest was placed on assisting small-businesses navigate the many restrictions imposed as a result of the COVID-19 pandemic. Resources such as the COVID-19 Workers & Business Resources website, Business Resource Kit, and Small Business Grants were made available to entrepreneurs.

Rowan County attracts people with wide range of interests, cultures and backgrounds. Residents can equally enjoy the quaintness of rural small-town living and access urban adventures. Individuals and families alike can take advantage of the many parks, lakes and trails. Along with experiencing the charm of the municipality’s downtown areas. There is truly something for everybody to enjoy and be their own kind of “original”.



NORTH CAROLINA

Be an original.®

Your Commissioners	1
Property Tax	2
Your Tax Dollars	3
Economic Development.....	4/5
Employment	6
Recreation & Seniors	7
Tourism	8/9
County Government.....	10-12
Protecting Children	13
Education.....	14/15
Phone Numbers.....	16/17
Solid Waste	17

QUICK FACTS

County Established	1753
Area (Square Miles)	511
Population	146,875
Median Household Income	\$51,927
Total Employers	2,682

Source: United Census Bureau
<https://www.census.gov/quickfacts/rowancountynorthcarolina>



YOUR COMMISSIONERS

Dear Rowan County Citizens,

As County Commissioners, it is our honor and privilege to present you with our Annual Report. This report gives residents an opportunity to take pride in the accomplishments of our county throughout the past fiscal year.

The report will highlight the statutorily required reporting of the finances and administrative activities of the county (NCGS 153A-82).

Thank you for being a part of our county.

Sincerely,

Chairman Greg Edds

Commissioner Judy Klusman

Commissioner Mike Caskey

Commissioner Craig Pierce

Vice-Chairman Jim Greene

PROPERTY TAX

**Rowan County Tax Rate for
2020-2021 Budget is**

.6575

COMPANY	VALUE (2020)	TOTAL LEVY	INDUSTRY
1 Duke Energy	\$577,459,052	\$3,796,793	Utilities
2 Food Lion, LLC	\$158,254,142	\$1,040,520	Food Distribution
3 Daimler Trucks North America	\$155,920,963	\$1,025,180	Manufacturing
4 Gildan Yarns	\$124,943,451	\$821,503	Manufacturing
5 Hitachi Metals NC, LTD	\$61,768,642	\$406,128	Manufacturing
6 Aldi, Inc.	\$48,490,615	\$318,825	Food Distribution
7 Norfolk Southern Corporation	\$45,641,618	\$300,093	Transportation
8 Piedmont Natural Gas	\$40,138,151	\$263,908	Utilities
9 Henkel US Operation	\$39,813,007	\$261,770	Manufacturing
10 Transcontinental Pipeline	\$34,666,518	\$227,932	Utilities

In addition to the \$0.6575 per \$100 on your property tax bill, there is a fire service tax. This tax is collected by the County and forwarded to each fire department. The rates are requested by each fire department and approved by the County Commissioners.

Fire District	Tax Rate
Locke	0.0975
Liberty	0.0537
East Gold Hill	0.0800
Woodleaf	0.0650
Scotch-Irish	0.0900
Richfield/Misenheimer	0.0700
South Rowan	0.0900
East Rowan	0.0700
East Landis	0.0425
West Rowan	0.0900
Rowan Iredell	0.0648

Fire District	Tax Rate
Enochville	0.0800
South Salisbury	0.0900
Rockwell Rural	0.0900
Pooletown	0.0900
Miller Ferry	0.0875
Union	0.0350
Mt. Mitchell	0.0726
Ellis	0.0850
Franklin	0.0900
Cleveland Community	0.0936
Atwell Township	0.0975
Bostian Heights	0.0900



Incorp. 1889
Population 4,456



Incorp. 1883
Population 848



Incorp. 1901
Population 1,571

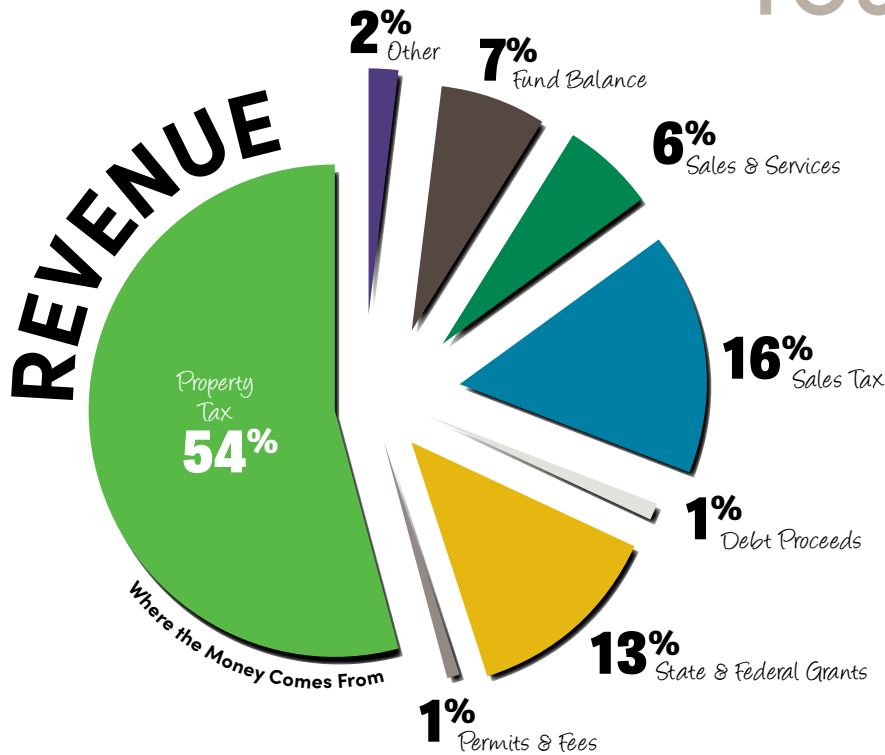


Incorp. 1903
Population 821



Incorp. 1901
Population 2,992

YOUR TAX DOLLARS

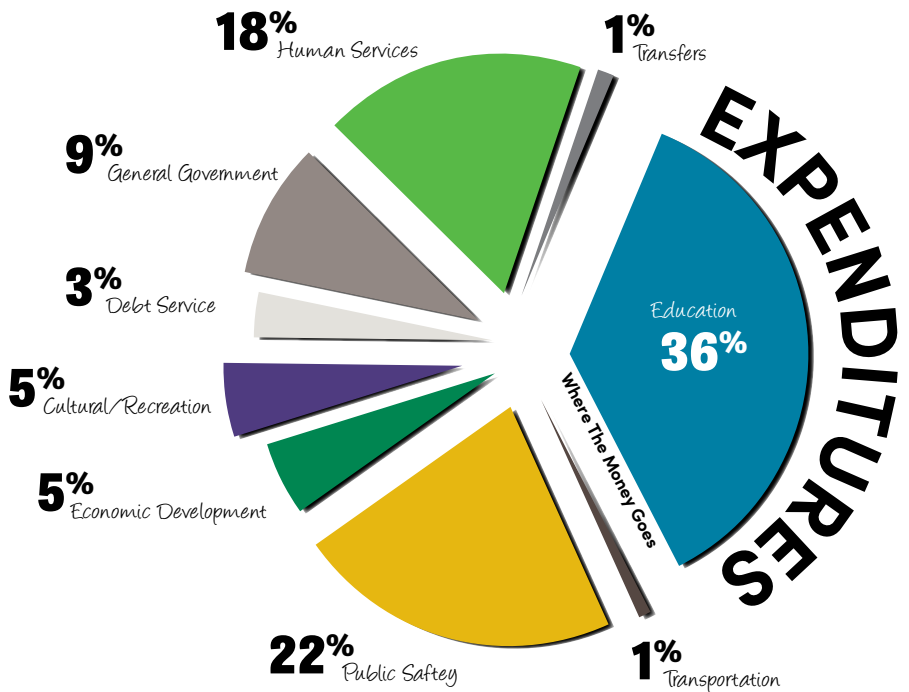


HOW TO CALCULATE TAXES

The 2020 tax rate for Rowan County is 0.6575.

This means property will be taxed at 0.6575 cents per \$100 of value. As an example, if your home is appraised at \$150,000, here is the formula on how to calculate your bill:

$$\text{\$150,000} / 100 \times 0.6575 = \text{\$986.25}$$



Source: NC OSBM



Incorp. 1984
Population 53,429



Incorp. 1901
Population 3,700

The Town of
Rockwell
North Carolina

Incorp. 1911
Population 2,308



Incorp. 1753
Population 36,215



Incorp. 1905
Population 3,317

ECONOMIC DEVELOPMENT

In
2020

The Rowan EDC managed over **80 PROJECTS** that resulted in **473 NEW JOBS** and **\$94.2 MILLION OF NEW INVESTMENT** in Rowan County



**PARTNERSHIP for
ECONOMIC DEVELOPMENT
SALISBURY, NC**

Be an original.™

Established in 1984, the Rowan EDC, Rowan County's Economic Development Council, is the lead business assistance resource for Rowan County and its ten municipalities, including the City of Salisbury. The primary goals of the Rowan EDC are to work with companies to retain existing jobs and create new ones in Rowan County, as well as bring new investment to our community.

Our staff offers a wide range of services to businesses looking to locate or expand in Rowan County including site identification and development, community assistance / grant identification, fiscal impact modeling, marketing assistance, and community demographic information.

OUR MISSION STATEMENT:

“To promote a vital economy to improve the overall quality of life for residents of Rowan County.”



Rod Crider
President
(704) 637-5526
Rod.Crider@rowanedc.com



Scott Shelton
Vice President
(704) 637-5526
Scott@rowanedc.com



Joanie Michael
Director of Operations
(704) 637-5526
Joanie@rowanedc.com



Kendall Henderson
Director of Business
Services
(704) 637-5526
Kendall@rowanedc.com



In August 2020, Continental Structural Plastics, a global leader in the formulation of advanced composites, and the design and manufacturing of components for the transportation industry, announced it will expand its operations in Rowan County. The company will invest \$45 million and create 61 new jobs as part of its latest expansion. Improvements will include the addition of a modernized paint and prime line, as well as a 50,000-square-foot building expansion to its facility at 6701 Statesville Boulevard.



Eastern Wholesale Fence, a well-known manufacturer and distributor of residential and commercial fence products, selected Rowan County for its new manufacturing and distribution facility. The company plans to create 142 new jobs over the next four years, as well as invest \$17.5 million in equipment and improvements to its new facility in the Mid-South Industrial Park.



In October 2020, Integro Technologies, a leading machine vision integrator, announced it will expand its operations in downtown Salisbury. The company plans to create 30 new jobs over the next five years and will invest \$2.6 million in equipment and improvements to its facility at 301 South Main Street.



PRODUCTIVE DEVELOPMENT

PRODUCTIVE DEVELOPMENT

The Rowan EDC is constantly striving to improve our inventory of available industrial sites. Since 2007, our organization has utilized the Duke Energy Site Readiness Program as an efficient way to analyze and develop marketing materials for potential new sites.

Rowan was the latest participant

In 2020, the 98-acre Lambe-Fisher Site near Spencer was the latest participant in the Duke Energy Site Readiness Program.

Over the last decade, our collaborative efforts with local government and community partners have resulted in over 2,000 acres of industrial land being made available and more 'shovel ready.'

EMPLOYMENT



RANK	COMPANY NAME	INDUSTRY	# EMPLOYEES
1	Food Lion, LLC	Food Distribution	3,703
2	Rowan Salisbury School System	Education	3,000
3	W.G. (Bill) Hefner VA Medical Center	Healthcare	2,281
4	Daimler Trucks North America	Manufacturing	1,650
5	Novant Health Rowan Medical Center	Healthcare	1,560
6	Chewy	Manufacturing	1,350
7	Rowan-Cabarrus Community College	Education	928
8	Rowan County	Government	872
9	Continental Structural Plastics	Manufacturing	504
10	City of Salisbury	Government	469

Source: Rowan Works, EDC



The Rowan County Chamber of Commerce is a private not-for-profit business advocacy organization (501c-6).

The Chamber has an active Board of Directors, volunteers and staff to assist the business community. It was started in 1925 and has accomplished a great deal in its 96-year history. Significant accomplishments include Yadkin River Bridge; I-85 improvements and utility connections; Rowan Airport (now called Mid-Carolina Airport) expansion; and, the development of the Paul E. Fisher Gateway Building.

The Chamber has over 800 members, representing nearly 20,000 employees in Rowan County and the surrounding area. Benefits include business advocacy, education and workforce development, professional development, membership directory, relocation packets, brochure racks, ribbon cuttings, networking programs, business referrals, member discounts, exposure for member firms and much more.

Some of the more popular programs are: Leadership Rowan, Power in Partnership, Business After Hours, Ambassadors, Candidate Forums, Washington, D.C. trips; Raleigh trips; Women in Business, Minority Business Council, Young Professionals, Annual Meetings, Disney Institute and the Dragon Boat Festival.

For more information contact the Chamber at 704.633.4221 or info@rowanchamber.com or www.rowanchamber.com or 204 E. Innes St., Suite 110, Salisbury, NC 28144.

RECREATION & SENIORS



THERAPEUTIC RECREATION

The Therapeutic Recreation Division of Rowan County Parks and Recreation provides opportunities for individuals with disabilities to acquire skills that will enable them to participate in recreation/leisure experiences of their choice and enhance their functional abilities within the community. Staff also provides advocacy and support for individuals with disabilities to participate in general recreation activities, as well as specialized therapeutic activities that consist of arts/crafts, health/wellness, sports, cultural arts, social enrichment, and community integration/leisure education. The Therapeutic Recreation Division is the home of Special Olympics Rowan County. For more information, contact Edward Hailey 704-216-7780 Edward.Hailey@rowancountync.gov

RUFFY-HOLMES SENIOR CENTER

Serving Rowan County, NC Older Adults

1120 S. MLK Jr. Ave., Salisbury, NC

To learn more: visit www.ruffyholmes.org
or call 704-216-7714

Ruffy-Holmes Senior Center is a non-profit, multi-site,
Designated Community Focal Point of Aging Services
for Rowan County Older Adults.

Life-Enriching Activities, Meals and Outreach Services assist
Older Adults in living independently in the community.

Wellness Classes	Arts, Clubs, Music
Travel, Social Events	Family Caregiver Support
CARS Transportation	
Medicare Insurance Counseling	
Video Classes from Home	
Technology Classes & Assistance	
Golf & Hiking Groups	Fitness Classes & Equipment
Computer Tablet Loans	Lunch Club Meals
Tax Return Assistance	

*North Carolina Senior Center of Excellence
& Nationally Accredited Senior Center*

SALISBURY/ROWAN SENIOR GAMES & SILVERARTS

- | | |
|-------------------|---------------------|
| • Softball | • Archery |
| • Basketball | • Racquetball |
| • Discus | • Cornhole |
| • Pickleball | • Swimming |
| • Shot Put | • Shuffleboard |
| • Long Jump | • Football |
| • Field | • Spin Casting |
| • Bowling Croquet | • Billiards |
| • Bocce | • Horseshoes |
| • Tennis | • Badminton |
| • Table Tennis | • Cycling |
| • Golf | • Bridge Tournament |
| • Mini-Golf | |

As a part of the Rowan County Parks & Recreation Department, Salisbury/Rowan Senior Games & SilverArts promotes good health, education, and fellowship among Rowan County adults ages 50+. Since beginning in 1983, the program has grown to more than 700 seniors and gets better each year. A total of 832 senior participants represented Rowan County in 2017, making Rowan County's program the largest in the state.

Programs offered include:
Silver Arts • Heritage Arts • Literary Arts
Performing Arts • Visual Arts

For more information, contact:

Savannah Daniel

704-216-7780

savannah.daniel@rowancountync.gov

TOURISM

Who we are:

The Rowan County Tourism Development Authority's (Rowan County Tourism), primary mission is economic and community development through tourism, destination marketing and destination development. The focus of Rowan County Tourism is to promote the growth and development of the visitor industry in Rowan County. Rowan County Tourism operates on an annual budget supported by visitor paid occupancy tax revenue and does not receive local government funding. Rowan County Tourism also manages the Paul E. Fisher Gateway Building, the Rowan Arts Council, the F&M Bank Trolley System, RailWalk Farmers Market Pavilion, and the Rowan County brand, Be an Original™.



Tourism in Rowan County Significantly Impacted by Covid-19 in 2020

Prior to the Covid-19 pandemic, 2020 started off strong with tourism revenues coming into Rowan County up 15% compared to the same period in 2019. Due to the Covid-19 pandemic, during 2020 the hospitality sector lost close to 2,000 jobs at the onset of the pandemic and slowly recovered jobs throughout the year. Overall, tourism expenditures in Rowan County decreased 29% from 2019. Much of 2020 was focused on fulfilling the needs of the community and local businesses during the unprecedented times.

Rowan County Tourism, in partnership with the Rowan County Chamber of Commerce and Rowan EDC, quickly launched the Covid-19 Business Resource Center in March 2020 and targeted local safe marketing campaigns. A website was quickly formulated to become a one-stop-shop for Covid-19 information and resources to support the community and businesses.

Business resource kits were designed and distributed free of charge to lessen the stress for local businesses and provide tangible resources for use in carrying out business operations under newly implemented restrictions. Throughout the year, as more information became readily available, Rowan County Tourism focused attention on supporting individual businesses and organizations specifically in the hospitality, tourism, arts, and cultural sector.





VISIT ROWAN COUNTY

NORTH CAROLINA

Be an original.®

Key Rowan County Tourism 2020 Highlights:

Utilized the county brand, **Be an Original**, to cohesively work with community partners to have a clear and concise communication strategy during the Covid-19 pandemic.

Launched the Covid-19 Workers & Business Resource website which **supported over 19,000** local businesses, organizations, and citizens.

Supported over 1,500 **Covid-19 Business Resource Kit** requests

Launched a Visit Local campaign to remind locals of the attractions and benefits of living in Rowan County. The Visit Local campaign was an integrated campaign utilizing social media, digital, radio, print and billboards encouraging citizens to shop local, eat local and visit outdoors.

Secured a **\$160,000 Cares Act grant** to support local arts and cultural organizations impacted by the pandemic.

Secured **\$22,000** from the North Carolina Department of Commerce to support marketing.

Maintained a strong digital presence through website, social media, blogs, and e-newsletters, that reached over **1.2 million people** during 2020.

Opened the **RailWalk Farmers Market Pavilion** in Downtown Salisbury, to serve as an outdoor event venue for the community and home to the Salisbury Farmers Market.

COUNTY GOVERNMENT



Greg Edds
Chairman



Jim Greene
Vice Chairman



Mike Caskey
Commissioner



Judy Klusman
Commissioner



Craig Pierce
Commissioner

BOARD OF COMMISSIONERS

The Rowan County Board of Commissioners consists of five (5) members who are elected at large in countywide elections to serve four-year staggered terms. The Board's main purpose is to maintain fiscal responsibility while providing mandated services as set out in the General Statutes and for additional services as passed on to the County by state and federal governments. The Board is also responsible for setting policies, goals and objectives to direct the County's growth and development, adopting and providing for ordinances, rules and regulations as necessary for the general welfare of County citizens and other services deemed appropriate and necessary by the Board.

ADMINISTRATION

The Clerk to the Board, County Attorney and County Manager serve at the pleasure of the Board of Commissioners. The County Manager is the chief administrator of county government. He is appointed by the Board of Commissioners and is responsible for the supervision of county operations in accordance with the laws, regulations, policies, direction and guidance the Board of Commissioners authorize. The County Manager, in conjunction with Finance Department staff, is responsible for preparing and submitting the annual budget to the Board, as well as advising the Board on financial matters, services and other issues.

The Clerk to the Board is responsible for keeping the minutes of the Board of Commissioners and the County Ordinance Books, as well as various other county records.

The County Attorney provides legal expertise and services to county staff and departments, and the Board of Commissioners.



Aaron Church
County Manager
(704) 216-8180
aaron.church@rowancountync.gov



Randy Cress
Assistant County Manager/
Chief Information Officer
(704) 216-8116
randy.cress@rowancountync.gov



Kelly Natoli
Assistant County Manager/
Human Resources Director
(704) 216-8150
kelly.natoli@rowancountync.gov



Carolyn Barger
Clerk to the Board
(704) 216-8180
carolyn.barger@rowancountync.gov



John W. (Jay) Dees, II
County Attorney
(704) 216-8180
jay.dees@rowancountync.gov



Siobhan Allen
Assistant to the County
Manager/Management Analyst
(704) 216-8193
siobhan.allen@rowancountync.gov

AIRPORT & TRANSIT

Valerie Steele, Director

(704) 840-7753 Airport | (704) 840-8888 Transit
valerie.steele@rowancountync.gov



50,000

Number of aircraft
operations that
took place last year

BUILDING INSPECTIONS

Thomas O'Kelly, Director

(704) 216-8612
thomas.o'kelly@rowancountync.gov



9,468

permits issued
fiscal year
2020/2021

FINANCE

Anna Bumgarner, Director

(704) 216-8174
anna.bumgarner@rowancountync.gov



ANIMAL SERVICES

Bob Pendergrass, Director

(704) 216-7772
bob.pendergrass@rowancountync.gov



3,340

Total number of
cats and dogs came
through the shelter
in 2020

COOPERATIVE EXTENSION

Amy-Lynn Albertson, Director

(704) 216-8970
amy-lynn.albertson@rowancountync.gov



2,160

Number of hours
worked by Cooperative
Extension volunteers

HEALTH

Alyssa Harris, Director

(704) 216-8871
alyssa.harris@rowancountync.gov



33,795

non-COVID-19 related
public health services
for Rowan County
citizens

BOARD OF ELECTIONS

Brenda McCubbins, Director

(704) 216-8140
brenda.mccubbins@rowancountync.gov



94,443

Total number of
registered voters in
Rowan County

EMERGENCY MANAGEMENT

Allen Cress, Chief

(704) 216-8510
allen.cress@rowancountync.gov



Daily Call Volume

EMS – 24,596
FIRE – 23,862
LAW – 139,804
OTHER – 4,198

HUMAN RESOURCES

Kelly Natoli, Director

(704) 216-8105
kelly.natoli@rowancountync.gov



BUILDINGS, GROUNDS, AND PARKS

Don Bringle, Director

(704) 216-7818
don.bringle@rowancountync.gov



600,000+

Number of visitors
to Rowan County
parks annually

ENVIRONMENTAL MANAGEMENT

Caleb Sinclair, Director

(704) 216-8589
caleb.sinclair@rowancountync.gov



20%

increase in total
volume of received
landfill solid waste
tons likely due to NC
stay at home orders

INFORMATION TECHNOLOGY

Randy Cress, Director

(704) 216-8116
randy.cress@rowancountync.gov



13.2M

number of unique
pageviews our
website received
in FY20

COUNTY GOVERNMENT

LIBRARY

Melissa Oleen, Director

(704) 216-8231

melissa.oleen@rowancountync.gov



73,701

Total library card holders. 410,913 items circulated & 56,961 reference questions answered

REGISTER OF DEEDS

John Brindle, Director

(704) 216-8637

jonathan.brindle@rowancountync.gov



05-07-18

Date our office was certified as a Passport Acceptance Facility

SOCIAL SERVICES

Micah Ennis, Director

(704) 216-8422

Micah.Ennis@rowancountync.gov



63,545

Number of individuals served through public assistance

PLANNING AND DEVELOPMENT

Ed Muire, Director

(704) 216-8599

ed.muire@rowancountync.gov



750+

Zoning permits issued for new & expanded residential & commercial activity

SHERIFF'S OFFICE

Kevin Auten, Sheriff

(704) 216-8700

kevin.auten@rowancountync.gov



TAX ASSESSOR

Wendell R. Main II "Chip", Director

(704) 216-8585

wendell.main@rowancountync.gov



PRE-TRIAL RELEASE

Janet Ruffin, Director

(704) 216-8733

janet.ruffin@rowancountync.gov



SOIL & WATER

Chris Sloop, Director

(704) 216-8733

chris.sloop@rowancountync.gov



TAX COLLECTOR

Tonya Parnell, Director

(704) 216-8552

tonya.parnell@rowancountync.gov



VETERANS SERVICES

Justan E. Mounts, Director

(704) 216-8139

justan.mounts@rowancountync.gov



7,939

Number of veterans served during FY 2020/2021

SIX WAYS COUNTY GOVERNMENT SERVES YOU

1. CULTURE, RECREATION & COMMUNITY SERVICE

- Libraries
- Parks & Recreation
- Cooperative Extension
- Soil and Water Conservation

2. EMERGENCY SERVICES

- Emergency Management
- Emergency Medical Services
- Fire Marshal
- 911 / Telecommunications

3. GROWTH MANAGEMENT

- Planning & Development
- Building Inspections

4. HUMAN SERVICES

- Public Health
- Social Services
- Rowan Transit System
- Veterans Services

5. PUBLIC SAFETY

- Sheriff's Office
- Law Enforcement

6. PUBLIC WORKS

- Solid Waste / Landfill
- Recycling Centers

PROTECTING CHILDREN

SOCIAL SERVICES

TOTAL AMOUNT OF BENEFITS ISSUED

Medicaid	\$246,595,340
Food and Nutrition	\$53,094,489
Child Support Collection.....	\$10,057,028
Day Care (Adult and Child)	\$5,410,333
Foster Care/Adoption Assistance/LINKS	\$3,543,295
Special Assistance and In Home Aide	\$1,147,862
Energy and Crisis Assistance.....	\$1,149,814
Work First-.....	\$441,754
Medicaid Transportation.....	\$801,584
Community Sponsored Programs	\$13,022
Total	\$322,254,521

COST FOR ADMINISTERING PROGRAMS

Federal	\$9,194,155
State	\$657,496
County	\$7,639,366
Total	\$17,491,017

It is the policy of NC Department of Health and Human Services to provide services, care, benefits, and assistance to all qualified persons without regard to race, color, national origin, sex, religion, age, disability, or political beliefs.

WHAT ARE CHILD WELFARE SERVICES?

Child Welfare Services focus on making sure that children are safe. This includes activities such as investigations, in-home services, foster care and adoption.

WHO HAS THIS RESPONSIBILITY IN ROWAN COUNTY?

The Rowan County Department of Social Services has the legal authority to protect children in Rowan County. This legal authority is defined in the North Carolina General Statutes.

STEPS TO BECOMING A FOSTER PARENT

- 1.** Be between the ages of 21 to 65 years old, married or single.
- 2.** Have adequate income to meet your family's financial needs.
- 3.** Have a clear criminal background check, with no prior history of Child Protective Services involvement.
- 4.** Pass a home inspection by the County Fire Marshal and DSS social worker.
- 5.** Pass a physical exam from your physician along with a TB test.
- 6.** Complete TIPS-MAPP (Trauma Informed Partnering for Safety and Permanence-Model Approach to Partnerships in Parenting.)



980-429-HOME (4663) or email
Fostering@rowancountync.gov

EDUCATION



2020-2021

RSS Principal of the Year

ZEBBIE BONDURANT

Shive Elementary School

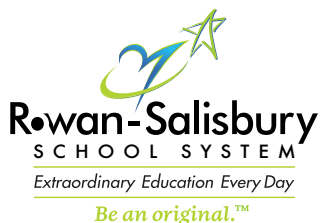


2020-2021

RSS Teacher of the Year

SALLY SCHULTZ

Knox Middle School



**Over the
past 5 years,**

our annual amount of scholarships awarded to
students has increased from approximately

\$9.5 MILLION
to
\$33 MILLION

During the **2020-2021** school year, Rowan-Salisbury Schools provides extraordinary education every day for more than **17,800 STUDENTS in 35 SCHOOLS.**

We set our high schoolers up for success by offering high school choice academies in the areas of:

- Agriculture & Farm-to-Table
- Business, Marketing and Finance
- Communications
- Health Sciences
- Fine and Performing Arts
- JROTC
- STEM & Advanced Manufacturing
- Early College – in partnership with Rowan-Cabarrus Community College

RENEWAL

At Rowan-Salisbury, we've been ranked in the top 10, nationally, for pioneering uses of technology in our schools. We've won Discovery Education's Innovation in Education Award, the National Digital Curriculum Strategy Award, and the National Digital Content & Curriculum Achievement Awards. In 2020, our students earned more than \$22 million in scholarships. Education Dive named us one of the Six Districts to Watch in 2020. The list goes on.

Inspired by the district's experience-backed vision and accomplishments and through state legislation, Rowan-Salisbury became the first – and only – district in the state to be granted Renewal status. Renewal grants more local control with charter-like flexibilities in areas of curriculum, budgeting, calendar & scheduling, and hiring of staff. Renewal is about doing what is right for children.

We believe children are more than their test scores. Our community deserves a school system with autonomy that empowers schools to create an engaged learning environment so students enjoy learning and teachers enjoy teaching.

As the Renewal School System, Rowan-Salisbury is committed to redesigning education to create authentic and personalized learning experiences for all students through teacher-led flexibility in curriculum, budgeting, hiring, staffing, and scheduling. Rowan-Salisbury teachers ensure that every student at every school is an engaged learner by:

- Mastering fundamental standards in English, math, science, and social studies
- Setting goals based on their unique smartness, career aspirations, and personal passions
- Developing interpersonal skills in order to thrive as productive citizens and employees

We empower teachers with the autonomy and flexibility to respond to and engage with each child's unique needs so every day, everyone discovers and achieves the extraordinary.



Dr. Carol Spalding



Vergel Lattimore



Dr. Jimmy Jenkins



David Nelson



Travis Allen, Chair Kevin Jones, Susan Cox, Brian Hightower, Vice-Chair Alisha Byrd-Clark, Dean Hunter, Jean Kennedy

ROWAN-SALISBURY BOARD OF EDUCATION

The Rowan-Salisbury Board of Education meets on the second and fourth Monday of each month. The Open Work Session begins at 4:00 p.m. on the second Monday of each month. The Open Business Meeting begins at 4:30 p.m. on the fourth Monday of each month. The public is welcomed and encouraged to attend all open meetings of the Board of Education. The public is encouraged to speak at the Board of Education business meetings. Communications to the Board will be heard at 6:00 pm. Those wishing to speak must sign up prior to 6:00 pm. Please refer questions to the Board Clerk, Sonya Mulkey, at 704-630-6102.

The Board of Education may meet in special sessions upon the call of the Chairman or of the Secretary as often as the school business of the administrative unit may require.

PUBLIC SCHOOLS

Rowan-Salisbury Schools

K-12
17, 866 Students
3,000 Staff
35 Schools
6 Traditional High Schools
1 Early College
1 Alternative School
7 Middle Schools
19 Elementary Schools
1 Virtual K-8 Academy

Kannapolis City Schools

K-12

Rowan-Cabarrus Community College

PRIVATE SCHOOLS

City of Refuge Christian (K-12)

Grace Academy (K-5)

North Hills Christian School (K-12)

Rockwell Christian School (K-12)

Sacred Heart Catholic School (K-8)

Salisbury Academy (K-8)

Catawba College

1270 Students

Livingstone College

845 Students

Hood Theological Seminary

171 Students

PHONE NUMBERS

LIBRARIES

Main (Salisbury)	(704) 216-8228
South Rowan (China Grove)	(704) 216-7727
East Branch (Rockwell)	(704) 216-7838
West Branch (Cleveland)	(704) 216-8290

MUNICIPALITIES

City of Kannapolis	(704) 920-4300
City of Salisbury	(704) 638-5270
Rowan County	(704) 216-8100
Town of China Grove	(704) 857-2466
Town of Cleveland	(704) 278-4777
Town of East Spencer	(704) 636-7111
Town of Faith	(704) 279-7500
Town of Granite Quarry	(704) 279-5596
Town of Landis	(704) 857-2411
Town of Rockwell	(704) 279-2180
Town of Spencer	(704) 633-2231

KANNAPOLIS CITY SCHOOLS

District Office	(704) 938-1131
Jackson Park Elementary	(704) 933-2831
Wilson Elementary	(704) 932-8656

ROWAN-SALISBURY SCHOOLS

Administration District Office	(704) 636-7500
--------------------------------	----------------

Elementary

Bostian	(704) 857-2322
China Grove	(704) 857-7708
Granite Quarry	(704) 279-2154
E. Hanford-Dole	(704) 639-3046
Hurley	(704) 639-3038
H.D. Isenberg	(704) 639-3009
Knollwood	(704) 857-3400
Koontz	(704) 216-0273
Landis	(704) 857-3111
Millbridge	(704) 855-5591
Morgan	(704) 636-0169
Mt. Ulla	(704) 278-2750
North Rowan	(704) 639-3042
Overton	(704) 639-3000
Rockwell	(704) 279-3145
Ethan Shive	(704) 279-2899
Summit K-8 Virtual Academy	(704) 630-7274
West Rowan	(704) 278-2131

Middle

Erwin	(704) 279-7265
China Grove	(704) 857-7038
Corriher-Lipe	(704) 857-7946
Knox	(704) 633-2922
North Rowan	(704) 639-3018
Southeast	(704) 638-5561
West Rowan	(704) 633-4775

High School

Jesse Carson	(704) 855-7297
East Rowan	(704) 279-5232
Henderson Independent	(704) 639-3134
North Rowan	(704) 636-4420
Rowan Early College	(704) 216-3873
Salisbury	(704) 636-1221
South Rowan	(704) 857-1161
West Rowan	(704) 278-9233

PUBLIC SAFETY

In case of emergency dial 9-1-1

Non-Emergency dial (704)216-8500

EMERGENCY SERVICES

Emergency Management	(704) 216-8900
Fire Services	(704) 216-8900
Emergency Medical Services	(704) 216-8900
Rescue Squad	(704) 633-5405

LAW ENFORCEMENT

Local

China Grove PD	(704) 857-2466
Cleveland PD	(704) 278-1900
East Spencer PD	(704) 637-1660
Granite Quarry-Faith Joint	
Police Authority	(704) 279-2952
Kannapolis PD	(704) 920-4000
Landis PD	(704) 857-2129
Rockwell PD	(704) 279-3420
Salisbury PD	(704) 638-5333
Sheriff's Office	(704) 216-8700
Spencer PD	(704) 633-3574

State

Alcohol Law Enforcement	(919) 733-4060
Attorney General	(919) 716-6400
Corrections/Prison	(919) 733-2126
Highway Patrol	(919) 733-7952
Medicaid Fraud Invest.	(919) 527-7700
Private Protective Services/	
Alarm Licensing	(919) 788-5320
Sheriff's Standards	(919) 779-8213
State Bureau of Investigation	(919) 662-4500

Federal

Alcohol, Tobacco & Firearms	(704) 716-1800
Drug Enforcement Agency	(202) 307-1000
Federal Bureau of Investigation.	(704) 672-6100
US Marshal	(202) 307-9100

COURT SYSTEM

Clerk of Court	(704) 797-3001
District Attorney	(704) 797-3010
Magistrate	(704) 797-3130
NC Attorney General	(919) 716-6400
Probation/Parole	(704) 639-7518

STATE & FEDERAL GOVERNMENT

Budd, Tedd (US House, District 13)	(336) 734-9093
Burr, Richard (US Senate-NC)	(202) 224-3154
Cooper, Roy (NC Governor)	(919) 814-2000
DMV Driver's License	(704) 633-5873
Employment Security Commission	
(Joblink)	(704) 639-7529
Farm Service Agency	(704) 637-1602
Ford, Carl (NC Senate District 33)	(704) 305-3541
Howard, Julia	
(NC House, District 77)	(919) 733-5904
IRS (Charlotte))	(704) 548-4100
IRS (Winston-Salem)	(336) 659-2740
Medicaid	(919) 855-4100
Medicare	(800) 633-4227
Sasser, Wayne	
(NC House, District 67)	(704) 982-8003
Social Security Administration	(877) 405-3157
Tillis, Thom (US Senate-NC)	(202) 224-6342
Warren, Harry (NC House, District 76)	(919) 733-5784

PUBLIC SAFETY

FIRE DEPARTMENTS

#1-Salisbury (E Innes)	(704) 638-5351
#2-Salisbury (S Main)	(704) 638-5352
#3-Salisbury (W Innes)	(704) 638-5353
#4-Salisbury (Statesville Blvd.)	(704) 638-5354
#5-Salisbury (S Main)	(704) 638-5355
#6-Salisbury (Cedar Springs)	(704) 638-5356
#9-Army National Guard	(704) 359-5823
#34-Miller Ferry (Bayridge)	(704) 637-1286
#35-Cleveland Comm. (Third Creek)	(704) 278-4356
#36-Pooletown (Reeves Island)	(704) 633-7080
#39-Richfield-Misenheimer	(704) 463-7613
#40-Atwell, China Grove	(704) 855-3240
#50-Atwell, Kannapolis	(704) 934-2375
#41-Bostian Heights	(704) 857-0208
#43-China Grove	(704) 857-4300
#44-Landis (W. Rice)	(704) 855-1269
#45-Cleveland Comm. (Statesville Blvd.)	(704) 278-4300
#46-East Gold Hill	(704) 279-8662
#47-East Spencer	(704) 633-0055
#48-Ellis Cross Country	(704) 638-0866
#49-Enochville Fire/Rescue	(704) 938-2890
#51-Rockwell Rural (Lowerstone)	(704) 279-5100
#54-Faith	(704) 279-4154
#55-Franklin (Hwy 601)	(704) 636-8634
#56-Franklin (Statesville Blvd.)	(704) 636-8634
#57-Granite Quarry	(704) 279-5597
#58-Landis (N. Central)	(704) 855-1269
#59-Liberty (St. Matthews)	(704) 637-8883
#60-Liberty (Tamerac)	(704) 637-8883
#61-Locke (Candlewick)	(704) 633-7285
#62-Locke (Briggs)	(704) 633-7285
#63-Locke (Grace Church)	(704) 855-4882
#64-Miller Ferry (Dukeville)	(704) 637-1286
#65-West Rowan (Centenary)	(704) 664-2238
#66-West Rowan (Bear Poplar)	(704) 278-0120
#67-West Rowan (Mount Ulla)	(704) 278-1621
#68-West Rowan (Back Creek)	(704) 326-1166
#69-Pooletown (High Rock)	(704) 633-7080
#70-Rockwell City	(704) 279-2921
#71-Rockwell Rural (Link)	(704) 279-2171
#72-Rowan-Iredell	(704) 278-0036
#73-Scotch-Irish	(704) 278-1273
#74-South Salisbury	(704) 637-3873
#75-Spencer	(704) 637-6135
#76-Union	(704) 633-5876
#77-Woodleaf	(704) 278-0077
#79-Mount Mitchell	(704) 938-3912
#91-Rowan Rescue (Salisbury)	(704) 633-5405
#94-Rowan Rescue (China Grove)	(704) 633-5405
Kannapolis	(704) 920-4260

FORESTRY

Forestry	(704) 216-8993
----------	----------------

UTILITIES

Duke Energy	(800) 777-9898
Energy United	(800) 522-3793
Hotwire Communications	(800) 355-5668
Landis Public Power	(704) 857-2411
PSNC Energy	(877) 776-2427
Piedmont Natural Gas	(800) 752-7504
Salisbury-Rowan Utilities (water/sewer)	(704) 638-5300
Spectrum (Time Warner)	(866) 874-2389
Union Power	(704) 289-3145

CONVENIENCE/RECYCLING SITES

Rock Grove	255 Rock Grove Church Road, Rockwell, NC (704) 855-1780 Hours: M-Sat: 7:00-7:00
Dunn's Mtn.	1735 Dunn's Mtn. Road, Salisbury, NC (704) 637-7399 Hours: M, F, Sat: 7:00-7:00
Providence	1985 Providence Church Road., Salisbury, NC (704) 636-1798 Hours: M, F, Sat: 7:00-7:00
Campbell Road	665 Campbell Road, Woodleaf, NC (704) 278-3006 Hours: M-Sat: 7:00-7:00
Goodnight Road	3282 Goodnight Road, Salisbury, NC (704) 637-2115 Hours: M, Sat: 7:00-7:00
Liberty	8835 Stokes Ferry Road, Salisbury, NC (704) 637-2745 Hours: M, F, Sat: 7:00-7:00

ROWAN COUNTY LANDFILL

789 Campbell Road
Woodleaf, NC
(704) 278-2211

HOURS: M-F: 7:30-4:00 Sat: 8:00-2:00

RECYCLING PROCESSING CENTER

1102 N. Long Street
East Spencer, NC
(704) 638-3045
HOURS: M-F: 7:00-3:30

Landfills are self-supporting and
DO NOT operate from taxes

Empty seed bags can be returned to vendors
for reuse or recycling

CONTROL LITTER BY COVERING AND SECURING LOADS!

Rowan County accepts televisions for recycling FREE at
the Long Street facility ONLY M-F 7:00-3:30

American Red Cross	(704) 283-7402
Atrium Health Cabarrus	(704) 403-3000
Better Business Bureau	(336) 852-4240
Clerk of Court	(704) 797-3001
Communities in Schools	(704) 797-0210
Convention & Visitors Bureau	(704) 638-3100
Cooperative Christian Ministry (Kannapolis) ..	(704) 786-4709
Family Crisis Council	(704) 636-4718
Habitat for Humanity	(704) 642-6292
Hefner VA Medical Center	(704) 638-9000
Humane Society of Rowan County	(704) 636-5700
Landfill	(704) 278-2211
Main Street Mission (China Grove)	(704) 855-2909
Meals on Wheels of Rowan County	(704) 633-0352
Novant Health Rowan Medical Center	(704) 210-5000
Recycling	(704) 216-8589
Rowan Arts Council	(704) 638-3100
Rowan County Chamber of Commerce	(704) 633-4221
Rowan County Housing Authority	(704) 633-8380
Rowan Helping Ministries	(704) 637-6838
Rowan Literacy Council	(704) 216-8266
Rowan United Way	(704) 633-1802
RowanWorks Economic Development	(704) 637-5526
Rufty Holmes Senior Center	(704) 216-7714
Smart Start Rowan	(704) 630-9085
The Salvation Army of Rowan County	(704) 636-6491
YMCA of Rowan County	(704) 216-9622

COUNTY GOVERNMENT

Ambulance Billing and Collections	(704) 216-8160
Animal Services	(704) 216-7768
Board of Elections	(704) 216-8140
Building Inspections	(704) 216-8619
Buildings, Grounds & Parks	(704) 216-7763
Cooperative Extension	(704) 216-8970
County Manager	(704) 216-8180
Detention Center	(704) 216-8770
Emergency Services	(704) 216-8900
Environmental Health	(704) 216-8525
Environmental Management	(704) 216-8589
Finance	(704) 216-8170
Health	(704) 216-8777
Human Resources	(704) 216-8100
Information Technology	(704) 216-8114
Mid-Carolina Airport (RUQ)	(704) 216-7749
Planning and Development	(704) 216-8588
Register of Deeds	(704) 216-8626
Rowan Public Library	(980) 432-8670
Rowan Transit	(704) 216-8899
Sheriff's Office	(704) 216-8700
Social Services	(704) 216-8330
Soil & Water Conservation	(704) 216-8999
Tax Administration	(704) 216-8558
Telecommunications	(704) 216-8500
Veterans Services	(704) 216-8138

STAY CONNECTED

YourRowan.com

ExploreRowan.Life



@RowanCountyNC

DEPARTMENT

Airport  

Animal Shelter  

Cooperative Extension   

Dan Nicholas Park 

Emergency Services   

Health Department   

Library     

Parks  

Register of Deeds 

Rowan Creek Week   

Rowan Wild  

Senior Games & Silver Arts 

Soil & Water 

Sheriff's Office - Child Support Enforcement 

Sheriff's Office 

Telecommunications 